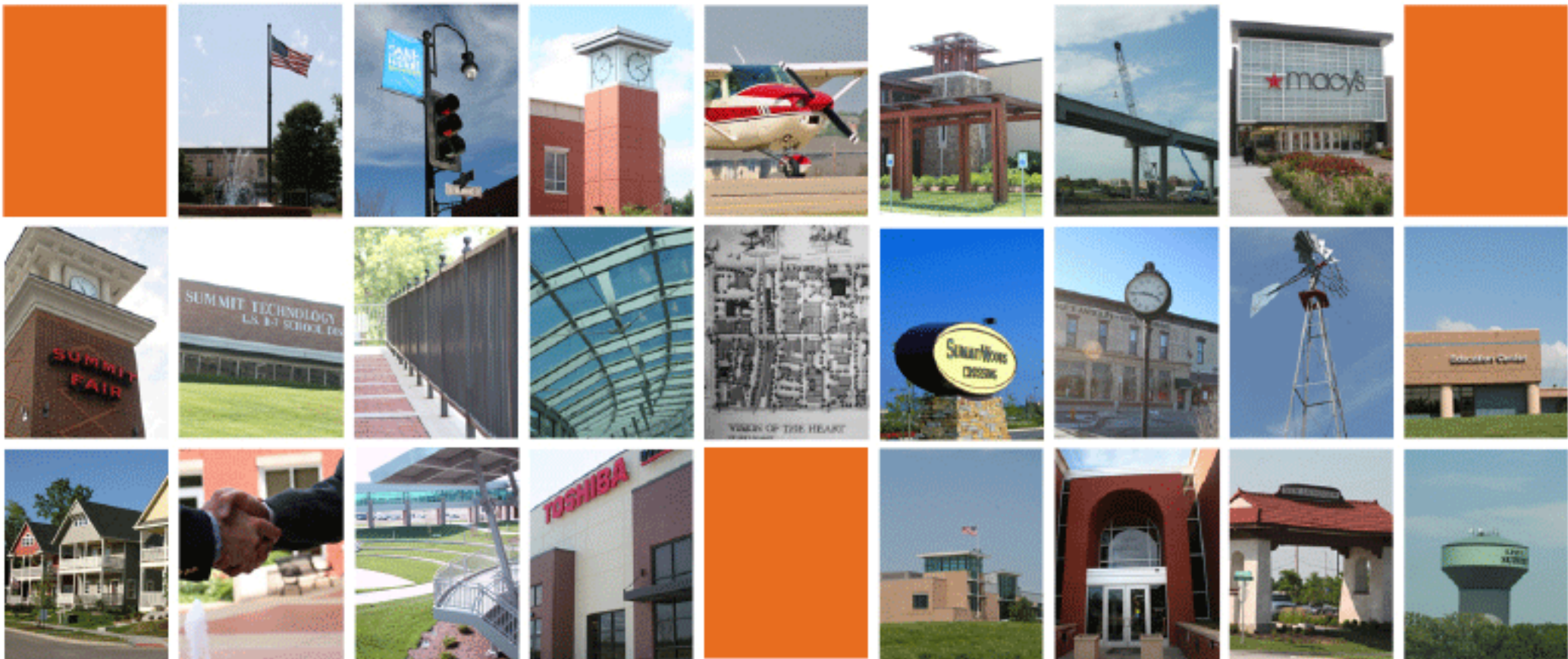




ANNUAL REPORT

2011

Past · Present · Future:
A look back · moving forward · what's ahead





Letter from the Chairman: Kurt Pycior



In 1986, Lee's Summit – with a population of 40,000 – was considered a “bedroom community,” but community leaders wanted to change that image. A public/private partnership was formed with the city, R-7 school district and the Chamber of Commerce, who worked for more than a year to form the Lee's Summit Economic Development Council (LSEDC). On May 5, 1986 LSEDC opened its doors with the goals of attracting new businesses to Lee's Summit and retaining businesses already located in the community.

Today LSEDC still operates with many of those same principles. For over 25 years, LSEDC has applied tried and true business retention and attraction strategies to create jobs and diversify the tax base in Lee's Summit – and the success has been evident in the community's growth.

As I look back on my year as Chairman of LSEDC, my original goal was to stay the course and weather the economic downturn to ensure LSEDC's mission was accomplished. To do this, I wanted to maintain private sector revenues, identify and secure incremental public sector funding, support the LS 360 strategic planning process, champion the Arnold Hall campaign, rigorously focus on LSEDC's four focal points and maintain strong communication with our investors and customers.

As we compile this annual recap, it is gratifying to look back at my original goals and see that they have been achieved. As I move into the position of Immediate Past Chairman, I look forward to continuing to serve the organization under Daren Fristoe's leadership in the coming year.

Looking forward, incoming Chairman Daren Fristoe will develop and implement a 24-month strategic plan that will guide LSEDC's work program, and includes:

- Improving our board and quarterly investor meetings to ensure there is more take-home value and educational content
- Increasing collaboration with our local and regional private and non-profit allies to make sure scarce dollars are leveraged
- Engaging our investors and Board members to increase LSEDC's reach and effectiveness. Feel free to invite regional business leaders and potential investors to our meetings.

Looking back at the past, LSEDC has enjoyed 25 years of successful economic development. Today we take a moment to celebrate our wins for the 2010 – 2011 fiscal year, while keeping an eye on what lies ahead for our exciting community. I'm excited to see what else is in store for the business community in Lee's Summit!

Sincerely,

Kurt Pycior
2010 – 2011 Chairman

Table of Contents

- 2 Leadership
- 4 By the Numbers
- 5 Focal Points
- 6 Community Product Improvement
- 8 Retain and Expand Existing Businesses
- 10 Attract Quality, Targeted Industry
- 13 Community Image Enhancement
- 16 Investor Listing
- 18 Staff

2010 - 2011 Leadership

LSEDC is a public-private partnership, led by the Executive Committee, governed by the Board of Directors and guided by the Advisory Board with broad regional representation. Without their active participation and dedication to LSEDC, our success would not be possible.

Executive Committee

- Kurt Pycior**, Pycior + Co — Chair
- Daren Fristoe**, The Fristoe Group, Inc. — Vice Chair
- Rick Viar**, Summit Bank of Kansas City — Secretary
- Brad Cox**, Langsford Development — Treasurer
- George Pagels, MD**, Saint Luke's East - Lee's Summit — Immediate Past Chair
- Steve Arbo**, City of Lee's Summit — City Manager
- Randall Rhoads**, City of Lee's Summit — Mayor
- David McGehee**, Lee's Summit R-7 School District — Superintendent

Board of Directors

- Steve Arbo**, City of Lee's Summit
- Keith Asel**, Hawthorn Bank
- Damond Boatwright**, Lee's Summit Medical Center
- Bill Brown**, Spectrum Consulting Group, LLC
- Brad Cox**, Langsford Development
- Becky Freetly-Graber**, candid marketing & communications
- Daren Fristoe**, The Fristoe Group, Inc.
- Gary Hawkins**, HSMC Companies
- Tom Jackson**, Metcalf Bank
- Charles Koester**, Plastic Enterprises Co., Inc.
- Rex Luchtel**, R & D Leverage
- David McGehee**, Lee's Summit R-7 School District
- George Pagels, MD**, Saint Luke's East - Lee's Summit
- Kurt Pycior**, Pycior + Co
- Randall Rhoads**, City of Lee's Summit
- Jeffery Smith**, Hawthorn Bank
- Rick Viar**, Summit Bank of Kansas City

LSEDC is a public-private partnership, funding comes from a mix of private sector investment and public entities.



Advisory Board

- Keith Dorrian**, A. L. Huber Construction, Inc.
- Brent Taylor**, Acceleration Laboratory Services, Inc.
- Rick Worrel**, Affinis
- Paula Derks**, Aircraft Electronics Association
- Roger Accurso**, American Food Services
- Chad Meyer**, Arco National Construction Company
- Steve Hull**, Arvest Bank
- Allan Emby**, Ash Grove Materials KC Concrete Group
- Madeline Romious**, AT&T
- Jeff Sullivan**, Bank Midwest
- Wayne Forgey**, Bank of Lee's Summit
- Bruce Hattig**, Bartlett & West, Inc.
- Mark Edwards**, Bennett Packaging
- Will Coates**, Billy Goat Industries
- David Block**, Block & Company, Inc.
- Kim Brightwell**, Blue Springs R-4 School District
- John Carlson**, Carlson Holdings, LLC
- Colleen Sliffe**, Carrow Real Estate Services, KC, LLC
- Keith Koehler**, ce1
- Mike Atcheson**, CEAH Realtors
- Scott Siemers**, Cerber Corporation
- Nancy Blackwell**, Chinnery Evans & Nail
- Ted Murray**, Colliers International
- Jay Dorst**, Commerce Bank
- Jim Moore**, Country Club Bank
- Jeff Kostos**, Dow Kokam
- Diane Seif**, DWA Enterprises, Inc.
- Rob Kutch**, Emergent Care Plus
- Tim Paulson**, Emery Sapp & Sons
- Don Nissanka**, Exergonix
- Don Olson**, First Community Bank
- Jacques Smith**, First National Bank
- Phillip Bartolotta**, Fogel-Anderson Construction Co.
- David Gale**, Gale Communities
- Gene Gamber**, Individual Member
- Jason Herrington**, Great Southern Bank
- Andrew Haynes**, Haynes Benefits PC
- Stan Christopher**, HDR - Archer
- Edward Desoignie**, Heavy Constructors Association of Greater KC
- John Brown**, Hollis & Miller Architects
- Steven Cowen**, Home Builders Association of Greater Kansas City
- Ora Reynolds**, Hunt Midwest Real Estate Development
- Spencer Thomson**, Husch Blackwell Sanders LLP
- Laurence Pressly**, Industrial Development Authority
- Michael Nguyen**, IronStone Bank
- Pat Dunn**, J.E. Dunn Construction Company
- Robbie Makinen**, Jackson County Economic Development
- Robert Toth**, JCI Industries, Inc.
- Dan Rexroth**, John Knox Village
- Dan Gabbert**, Kansas City Transitions Group
- Greg Kindle**, KCPL
- Bill Moore**, King Hershey Attorneys At Law
- Jay Burchfield**, Lakewood Business Center
- Bud Hertzog**, Lee's Summit Animal Hospital
- John Beaudoin**, Lee's Summit Journal
- Tom Lovell**, Lee's Summit Parks & Recreation
- Jeff White**, McCown Gordon Construction
- Karen Messerli**, Individual Member
- Paul Ryan**, Metcraft Industries
- Fred Grogan**, Metropolitan Community College - Longview
- Mark Meyer**, Meyer Companies
- Bill Briley**, Ministerial Alliance

- Pam Levetzow**, Missouri Gas Energy
- Christine Bushyhead**, Mitchell Kristl & Lieber, P.C.
- Jon Ellis**, Paradise Park
- Corey McDonald**, PaveGuard Technologies
- Wendell Wendling**, Pfizer Global Manufacturing
- Jon Plaas**, Plaas Associates
- Greg Peters**, Plastic Enterprises Co., Inc.
- Ed Croteau**, Polyainers, Inc.
- Allan Gardner**, Power Group Companies
- Cassie Lane**, RED Development
- Alan Flory**, ReDiscover
- George Pagels, MD**, Saint Luke's East - Lee's Summit
- Flip Short**, Signature DNA
- Wes Cowan**, Space Center Kansas City
- David Frantze**, Stinson, Morrison, Hecker
- Machelle Riffe**, Summit Christian Academy
- Roger Meyer**, Summit Concrete
- Robert Griesenauer**, Syntech Corporation
- Chip Moxley**, tingle flooring
- Tom Saul**, Titan Construction
- David Townsend**, Townsend Capital, LLC
- Charlie Shields**, Truman Medical Center Lakewood
- Brian Hutchin**, UMB Bank
- Larry Hillier**, Union Bank
- Donna Moore**, United Way of Greater Kansas City
- Carolyn McKnight**, University of Central Missouri
- John Martin**, Viracor - IBT Laboratories
- Vicky Cundiff**, Weed Man/Turf's Up, Inc.
- Aaron March**, White Goss Bowers March Schulte & Weisenfels

By the Numbers

- Announced New Jobs Created/ Retained: **314**
- Announced New Capital Investment: **\$60,120,000**
- Square Feet: **295,000**
- Average Salary of New Payroll: **\$48,000**
- VIP Business Visits: **39**
- VIP Business Assists: **60+**

\$60,120,000 295,000
 \$48,000 39 60+ 314
 \$60,120,000 295,000
 \$48,000 39 60+ 314
 \$60,120,000 295,000
 \$48,000 39 60+ 314
 \$60,120,000 295,000
 \$48,000 39 60+ 314
 \$60,120,000 295,000
 \$48,000 39 60+ 314
 \$60,120,000 295,000
 \$48,000 39 60+ 314
 \$60,120,000 295,000
 \$48,000 39 60+ 314
 \$60,120,000 295,000
 \$48,000 39 60+ 314



Foresight and Planning
 During the last 25 years, the community and its marketing arm, LSEDC, has benefited from a quiver full of pro-economic development policies put in place by forward-thinking leaders.

4 FOCAL POINTS

In 1986, LSEDC was founded as public-private partnership. That public-private partnership is still alive and well today – and LSEDC still operates with many of the same tried and true goals and objectives set forth at its inception. Today, LSEDC is led by its mission and four focal points guide all of LSEDC's activities:

MISSION: to attract and retain business by partnering with allies to create and market a high quality of life, pro-business community

COMMUNITY PRODUCT IMPROVEMENT

As a trusted, neutral advisor, LSEDC will promote a pro-business environment and civic dialogue by collaborating with public and private sector stakeholders to improve the quality of life in Lee's Summit.

BUSINESS RETENTION AND EXPANSION

Work with local employers to act as their ombudsman to help resolve problems and to grow their businesses.

TARGET INDUSTRY ATTRACTION

Work with investors, community partners and allies to attract investment and higher paying jobs that contribute to the tax base.

COMMUNITY IMAGE ENHANCEMENT

Publicize and merchandise Lee's Summit to keep the community at the top of opinion and decision makers' minds.



Community Product Improvement

Airport Expansion Progresses

In the fall of 2010, City Council approved a preliminary development plan for the East Terminal Area of the Lee's Summit Municipal Airport that would make the space ready for future development. The preliminary development plan is a multi-phased plan that would cover a 107-acre area at the southwest corner of Strother and Hagan Roads. The proposed improvements include a new terminal and hangar complex, which would house corporate office space. The preliminary development plans also include a potential space for a restaurant facility.

In March 2011, Council approved the runway expansion to 5,500 feet, which was a part of the Airport Business Plan. Extending the runway will allow the airport to attract more corporate jets, and in turn, sell more fuel. In early May, Council approved nine items relating to the future and expansion of the Lee's Summit Municipal Airport. While some of the actions simply authorized a continuation of pavement maintenance at the airport – work that was started last fall and will be completed this spring – much of these decisions are a direct result of the Airport Business Plan that was approved in March 2011.

The latter actions authorized the execution of agreements between the City and the Missouri Highways and Transportation Commission for grants that will partially fund land acquisition and design services for the expansion of runway 18-36. The grant will reimburse 95% of the design services and land acquisition costs. According to city information, the local match required is \$4,286.

Citizen-Led Strategic Plans
Strategic Planning is a vital process that Lee's Summit began in the early 1990s. Identifying a vision is necessary to establish goals and objectives to better serve the community now and into the future.

Lee's Summit 360 Strategic Planning Process



Since its inception in 2007, LSEDC has actively participated in the Lee's Summit 360 Charting Tomorrow Strategic Planning Process, especially the economic development Key Performance Area (KPA). The final plan has 10 specific economic development action steps, and more than 50 mentions of economic development are woven throughout several of the key performance areas, which is why it is critical for LSEDC to remain actively engaged in the implementation of the Lee's Summit 360 plan.

The development of a community brand was one of the critical success factors identified during the Lee's Summit 360 Strategic Planning. Today, that process is underway. After conducting a search through an RFP process, the City of Lee's Summit has selected North Star Destination Strategies, a firm out of Nashville, Tennessee that specializes in community branding. LSEDC has been and will continue to be actively involved in the branding process and participated in North Star's initial information gathering visit in June 2011. The City expects the branding will be complete in the Fall.



Championing Encore for Arnold Hall Campaign

Since 2009, LSEDC – and many of its investors – have been involved in the \$4.5 million campaign to transform Arnold Hall into a regional performing arts center in downtown Lee's Summit. LSEDC was integral in the application the City presented to the Missouri Development Finance Board for \$1 million in tax credits to help attract a total of \$2 million in contributions – nearly half of the total campaign need.

In April 2011, the Encore for Arnold Hall campaign received its 501c3 non-profit organization status. With this, the campaign is ready to accept tax-deductible gifts from generous donors.



Strother Road Interchange

In August 2010, a new \$15 million interchange at Strother Road and Interstate 470 opened in Lee's Summit. The new interchange provides convenient access from the interstate to a light industrial and professional office park space area between Colbern and Woods Chapel Roads, helping to relieve traffic.

LSEDC Support for City No Tax Increase Bond Issues

During the November 2010 election, the City put forth "No Tax Increase" General Obligation Bond ballot issues. LSEDC, along with its CEO roundtable group, the Lee's Summit Gateways Business Alliance (LSGBA), voted in favor of a Resolution of Support for the City of Lee's Summit No Tax Increase Bond Issue. LSEDC staffs the LSGBA as part of its activities to help expand and retain business in Lee's Summit. LSGBA provides a venue for the community's primary industry CEOs to discuss areas of mutual concern and develop action plans to address them.



On the Record

In October 2010, LSEDC completed its annual On the Record with Jim informal lunches. More than 60 investors came to six brown bag lunches to learn about current events and issues affecting the city and LSEDC. There was major interest in the airport runway extension progress. There was also considerable discussion about the economy, belt-tightening and voter climate for the now-passed city no tax increase bond issues. Attendees also discussed the \$.89 school ballot issue in February 2011 to increase the operating levy to offset state and federal cutbacks. Finally, there was discussion of Lee's Summit's strengths, weaknesses, opportunities and threats.



Retain and Expand Existing Business

Valued Industry Partner (VIP) Program and Business Retention Report

Business retention and expansion is an important focal point in LSEDC's comprehensive economic development strategy. LSEDC staff provides assistance to Lee's Summit businesses on an ongoing basis. One of the most important parts of the VIP program are the one-on-one business visits. Through these visits, LSEDC can help identify areas where assistance resources may be available. These visits also provide businesses the opportunity to confidentially share their input and insights on Lee's Summit as a place to do business. This data is shared biennially in an aggregate report to the Lee's Summit business community, City Council and staff, LSEDC, the Chamber and various other stakeholders.

At the June 2011, Board of Directors/Advisory Board meeting, LSEDC presented the results of the 2011 VIP business retention report. Results indicate positive news, with 68% of the 47 companies interviewed reporting an increase in sales, while 70% indicate an expansion is planned for the next 3 years – leading to 41 new jobs and 130,000 square feet.



Eastern Jackson County Regional Collaboration

LSEDC continued regional collaboration with its peers via the Eastern Jackson County Development Alliance (EJCDA). The EJCDA works together to promote, retain and attract businesses in the communities of Lee's Summit, Blue Springs, Independence, Grain Valley, Grandview, Oak Grove and Raytown. By maximizing resources, EJCDA can ensure the region grows and ultimately benefits each individual community. This year, EJCDA offered a Business Solutions series of mini-seminars geared to small businesses on topics including RSS feeds, the First Steps from Home – Entrepreneur Start Up and Resources and Quick Books.

EJCDA also offered seminars on state and local incentives and a lunch and learn about the new health care law. The group also held a Job Fair/Career Expo in October 2010, partnering with the New Landings Job Club. The event was designed to bring large numbers of well-qualified, diverse professionals seeking employment opportunities and services to area employers.

Incentives to Attract Businesses; Improve Infrastructure
Lee's Summit has used strategic, aggressive and prudent incentives to attract/retain investment in the community – growing the commercial tax base.



OneConnect Business Assistance Resource



Growing a stronger business means asking the right questions and finding the right answers. That's why the Eastern Jackson County Development Alliance (EJCDA) created the OneConnect EJC business resource network to aid in building stronger, healthier, more sustainable businesses in the region. Launched in March 2009, OneConnect EJC is a one-stop shop for the region in finding business resources available to local businesses. OneConnect EJC can be used to gather information about a company, its opportunities and challenges. With OneConnect EJC, this one point of contact process can then tap into multiple resources, the responses for services and proposals are streamlined and provided back to the company in an accelerated and confidential manner.

As an active member of the EJCDA, LSEDC has been instrumental in the development of and continued refinement of OneConnect EJC. Lee's Summit companies can work through LSEDC to utilize this regional business resource network.

GEHA Expands in Lee's Summit

The Government Employees Health Association Inc. (GEHA), a nonprofit insurer, has purchased an approximately 45,000-square-foot building in Lee's Summit near I-470 and Douglas Road. GEHA will relocate between 150 and 200 people to the former AT&T call center at 201 N.E. Mulberry Street in July 2011. According to GEHA President Richard Miles, the move will relieve congestion in current buildings that are crowded.

GEHA employs 1,000 people between two Eastern Jackson County locations, including a 108,000-square-foot call center in Independence and its 45,000-square-foot headquarters across the street from the new call center location. The building, which already had infrastructure to accommodate a call center, was an attractive fit for GEHA.

Saint Luke's East-Lee's Summit Continued Expansion

This year, Saint Luke's East-Lee's Summit completed the addition of its fourth floor, and is about to build a fifth as part of its \$68 million expansion, which will include 182,000 square feet of new construction and the addition of 58 new hospital beds and room for 52 more. The plans include the completed construction of building F, a five-floor, 90,000-square-foot building attached to the main hospital. Of those five floors, four will be used for patient care – with the other used for mechanical space – the first of which will be the future home to the Saint Luke's Cancer Institute. Building F will also house a new space for the Neonatal Intensive Care Unit, which will expand the available NICU beds to 20. The NICU will also be upgraded from Level 2 to Level 3A – meaning the hospital will be able to take care of younger, sicker babies. Also in Building F will be the new Surgical Intensive Care Unit, which will include 16 new beds. The Emergency Department and Surgical Services Department will also be expanded.

Viracor-IBT Moves Operations from Kansas

Following the merger of ViraCor with IBT, in June 2011 Viracor-IBT completed the consolidation of its Lenexa, Kansas facilities – moving 50+ employees and operations to a newly renovated building at the Lee's Summit campus.

“Because 80 percent of a community's growth comes from within, it is important for LSEDC to have a solid business retention and expansion strategy,” says Teresa Evans, LSEDC Vice President

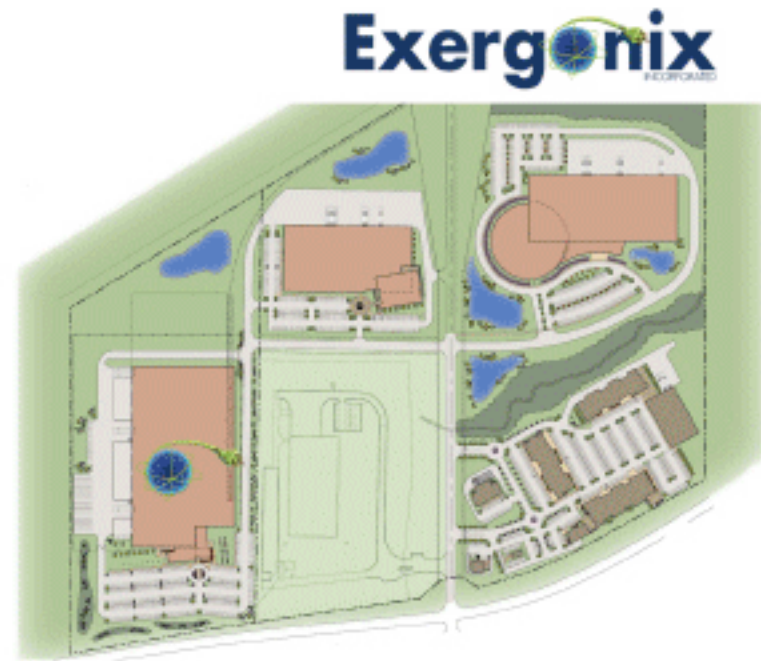


Attract Quality, Targeted Industry

Exergonix Becomes a Reality in Lee's Summit

In January 2011, Exergonix, a green technology company that bridges the gap between energy production and consumption by storing and distributing energy from utilities, wind and solar power plants, announced it would locate its state-of-the-art global headquarters in Lee's Summit.

Although the original scope of the project changed, in June 2011, Exergonix reached an agreement with the City of Lee's Summit where the City will advance \$1.4 million to serial entrepreneur Don Nissanka to purchase Pfizer's 83 acres on MO 291 just south of US 50. Nissanka has a vision for this location as a green energy park which could house the University of Central Missouri's new campus and other manufacturers who will focus on green jobs. In the next 90 days, Nissanka and the City will execute a development agreement which ensures an investment of at least \$50 million and 150 jobs with an average salary of \$45,979. Exergonix is a pioneer in moveable, rechargeable energy products to complement the electric grid and store power from wind and solar farms.



“We want to be a part of a community that embraces business. When a community supports companies like Lee's Summit has supported Exergonix, it sends a strong message to investors outside the region,” Exergonix CEO Don Nissanka said. “Several local angel investors helped get Exergonix started, which had an impact on our decision. The City of Lee's Summit also stepped up significantly to keep Exergonix here. Getting the community involved to build a successful business was a winning strategy for Lee's Summit.”



I-470 and Strategic Interchanges
New interchanges have not only helped increase access to Lee's Summit, but helped shape economic development by attracting and retaining industry and business in our community



Community Image Enhancement

Lee's Summit Ranks 27 of 100 Small Cities in America



In July 2010, Money Magazine announced its 2010 Best Places to Live, and Lee's Summit made the list. The highest ranked Missouri city on the Eastern side of the Kansas City metro — Lee's Summit ranks 27 out of the 100 best small cities in the United States, moving up from its 2008 position as number 79. To be named one of America's 100 best places to live, the city must offer plentiful jobs, excellent schools and affordable housing.

LSEDC Lands State Recognition

The 2010 Downtown Lee's Summit Business Report, a collaborative project between LSEDC and Downtown Lee's Summit Main Street (DLSMS) won an award for Best Economic Restructuring Story at the Missouri Main Street Conference held in August 2010. The report was a compilation of in-person interviews conducted with downtown business owners by a team of LSEDC-trained volunteers, designed to identify issues that can be addressed to improve the viability of businesses in downtown. LSEDC aggregated the data into a comprehensive report, which was designed by LSEDC's marketing partner candid marketing.

Thanks to proactive public relations efforts, LSEDC was involved in 45 articles this year, generating more than 250,000 impressions. Had we paid for the space in advertising, it would have cost over \$75,000.

Jim Devine is 2010 Missouri Professional Economic Developer of the Year



In May 2010, Jim Devine, LSEDC President and CEO, was named by the Missouri Economic Development Council (MEDC) as the 2010 Professional Economic Developer of the Year. This prestigious award is presented to an MEDC member who has made significant contributions in the field of community-based economic development.

"The overall award submittal was reflective of Jim Devine's long and active career in economic development. This award is very special to MEDC, and Jim's many successes and achievements make him a worthy recipient," said John Mehner, CCE, MEDC President and CEO of the Cape Girardeau Area Chamber of Commerce. "Jim has exhibited leadership on regional and national levels. His decision-making skills speak to successful projects he has been involved with throughout his career. We are proud to welcome Jim as Missouri's 2010 Professional Economic Developer of the Year."

The Professional Economic Developer of the Year award winner is selected by the Counselors of MEDC, which is an elected group of professionals who have achieved great success in their economic development careers. "I am truly honored to receive this award from my peers in economic development around the state," Devine said. "Being nominated by Greg Foss, my counterpart at the City of Lee's Summit, is indicative of the strong public-private partnership and mutual respect LSEDC enjoys with the City."



Lee's Summit Participates in Tour of Jackson County

In April 2011, Jackson County Executive Mike Sanders and other County staff led local and state elected officials on a tour of key economic development sites within the county. Major stops on the tour included sites that already are or will soon become focal points for economic development in Blue Springs, Independence and Lee's Summit. The tour showcased the Missouri Innovation Park in Blue Springs, the Independence Regional Innovation Center and the ongoing bio-tech and "green energy" initiatives in Lee's Summit.

"Green" technology and alternative energy, in addition to bioscience, are the primary factors helping spark economic development in Lee's Summit. Other Lee's Summit developments touted during the tour included:

- The Summit Technology Center, featuring 1 million square feet of space, of which 99.7 percent has been leased. (More than 5,000 people are currently employed at this location.)
- The bio-science industry with both Viracor-IBT and Acceleration Laboratory Services being based in Lee's Summit.
- Dow Kokam, a business that local entrepreneur Don Nissanka founded as Kokam and in 2008 merged with Dow Chemical. Dow Kokam provides state-of-the-art lithium ion batteries for defense and industrial applications. The company's Research & Development Center in Lee's Summit is a world-class facility, featuring more than \$40 million in automated equipment.

LSEDC Celebrates 25th Anniversary

Since 1986, LSEDC has been a driving force behind economic development in Lee's Summit. To commemorate this milestone, at the April 2011 Quarterly Investor Meeting, LSEDC produced a high-energy event that recognized 25 issues, events, companies and individuals that have contributed to the growth and success of LSEDC.



Attracting New and Expanding Existing Companies
Lee's Summit has the potential to become a one-stop learning lab for the promises engendered in the continuum of green energy: from manufacturing, to assembly, to applications all in one large campus: our community Lee's Summit.



Click [HERE](#) to watch the video



Attract Quality, Targeted Industry

Attract Quality, Targeted Industry

As the regional economy is beginning to pick up, some of its ripple effects are finding their way to Lee's Summit. Empty space in our existing, newer flex buildings is being seriously considered; however, the lack of spec buildings in general continues to limit our competitive position. While our prospect inquiries were down this year, their quality was up. LSEDC partnered with the Chamber of Commerce and statewide allies to attempt to get legislation passed to help attract capital-investment-rich data centers and obtain a 50 percent Angel Investor Tax Credit to compete with Kansas' credit. Both efforts failed in Jefferson City for the second year in a row. LSEDC is the lead supporter of Show Me Angels, a local network of 20+ SEC qualified investors who strive to invest in local companies. In the last two years, over \$3 million was invested in start-ups.

Successful communities utilize inclusive economic development strategies



Green Technology Vision for Lee's Summit

With less than 10 percent of land available in Lee's Summit, how we develop the remaining parcels is critical to the future growth of our progressive community. One of the last large pieces of land – and one that is considered the gateway to Lee's Summit – is the corner of View High and I-470. Although this intersection stands empty today, there is a far-reaching effort underway to develop this prominent entrance to Lee's Summit: the Green Technology Corridor.

This public-private development initiative between Lee's Summit entrepreneur and founder of ViraCor Laboratories, Flip Short, the City of Lee's Summit and LSEDC will position the community for years to come through a sustainable business park, similar to Corporate Woods in Overland Park.

Since two-thirds of residents commute outside of Lee's Summit every day, a master-planned development like the Green Technology Corridor that focuses on attracting sustainable, clean industries will create high-paying, quality jobs that keep tax dollars in our city. This effort will stem the daily "brain drain" while having positive effects on both the economy and environment in Lee's Summit.

The vision of community leaders and private businesses to make the Green Technology Corridor a reality will position Lee's Summit to better compete. Such vision will help bring corporate headquarters of large companies in the green energy, health care, technology and sustainable industries. This type of sustainable business park and the benefits it will bring to our community is the future of development in Lee's Summit.

Lee's Summit Entrepreneurs Launch Energy and Environmental Testing Laboratory

In July 2010, Keith Koehler and Robert Pendland, co-founders of Acceleration, LLC, formed a new business venture called ce²™. The new company, headquartered in Lee's Summit, performs energy and environmental testing for government entities, large engineering firms and other companies with new and renewable energy sources. ce² is in the process of obtaining certifications from the Department of Defense, National Environmental Laboratory Accreditation Conference (NELAC) and ELAP (Environmental Laboratory Accreditation Program).

Koehler and Pendland chose to locate ce² in Lee's Summit, purchasing a 10,800 square foot building at 324 NW Capital Drive. Koehler plans to add 10 to 12 high-quality chemist and scientist jobs in the next year and estimates ce² will generate over \$1 million in revenue during its first year.

“When developing this venture, it was only natural that the global headquarters of ce² would be in Lee's Summit,” said Keith Koehler, President of ce². “Lee's Summit is a wonderful place for businesses, and we look forward to continued partnerships with the community as we grow this new company.”



Airport is an Economic Development Asset

Our airport is more desirable than other metro area players due to its ease of access and lack of overcrowding.



2010 - 2011 Investors

Angel Investors \$10,000+

City of Lee's Summit
KCP&L
Lee's Summit R-7 School District
Viracor - IBT Laboratories

Pacesetter \$7,500+

Lee's Summit Medical Center
Pfizer Global Manufacturing
Saint Luke's East - Lee's Summit

Leadership Partner \$5,000+

Acceleration Laboratory Services, Inc.
Bank Midwest
Bank of Lee's Summit
Billy Goat Industries
Blue Springs R-4 School District
CEAH Realtors
Cerner Corporation
Emery Sapp & Sons
HSMC Companies
Langford Development
Metcalf Bank
Plastic Enterprises Co., Inc.
Townsend Capital, LLC
Truman Medical Center Lakewood
W.C. Tingle Company

Investors \$750+

ACI/Boland, Inc.
Bank Liberty
Bob Sight Ford
Brightergy/Solar Solutions
Brotherhood Bank & Trust
Cassidy Turley Commercial Real Estate Services
ce2i
Chief Heating & Cooling, Inc.
Curry Investment Company
Deal Bug
DLR Group, Inc.

Dodig Law Firm, LLC
Exergonix
Fristoe Group, Inc.
Geiger Ready-Mix Co., Inc.
George Butler Associates, Inc.
Gilmore & Bell, P.C.
Government Employees Health Association
Grand Street Company, LLC
Heartland Business Capital
Home Builders Association of Greater Kansas City
Hunt Midwest Real Estate Development

Jackson County Economic Development
L & K Realty Co.
Land Source
Lee's Summit Animal Hospital
Mark E. Parrish, LLC
Metropolitan Community College - Longview
Missouri Gas Energy
Mitchell Kristl & Lieber, P.C.
Ogletree, Deakins, Nash, Smoak & Stewart
PaveGuard Technologies
Pfeifer-King Building Corp.

PGAV Architects
Signature DNA
Spectrum Consulting Group, LLC
State Farm Insurance
Toys 'R' Us
Ultimate Software
Union Bank
Unitech
University of Central Missouri

Benefactors \$2,500+

A. L. Huber Construction, Inc.
AT&T
Affinis
American Food Service
Arco National Construction Company
Arvest Bank
Ash Grove Materials KC Concrete Group
Bartlett & West, Inc.
Bennett Packaging
Block & Company, Inc.
candid marketing & communications
Carrow Real Estate Services, KC, LLC
Commerce Bank
Country Club Bank
Dow Kokam
DVA Enterprises, Inc.
Emergent Care Plus
First Community Bank

First National Bank
Fogel-Anderson Construction Co.
Gale Communities
Great Southern Bank
Hawthorn Bank
Haynes Benefits PC
HDR - Archer
Heavy Constructors Association of Greater KC
Hollis & Miller Architects
Husch Blackwell Sanders LLP
Industrial Development Authority
IronStone Bank
J.E. Dunn Construction Company
JCI Industries, Inc.
John Knox Village
King Hershey Attorneys At Law
Lakewood Business Center
Lee's Summit Journal

McCown Gordon Construction
Metcraft Industries
Meyer Companies
Paradise Park
Polytainers, Inc.
Power Group Companies
Pycior + Co
R & D Leverage
RED Development
Space Center Kansas City
Stinson, Morrison, Hecker
Summit Bank of Kansas City
Summit Christian Academy
Symtech Corporation
Titan Construction
UMB Bank
White Goss Bowers March Schulte & Weisenfels

Patron \$1,500+

Aircraft Electronics Association
Colliers International
HyVee Food Stores
ServiceMark Telecom
Superior Bowen Asphalt Company, LLC

Sponsors Up to \$749

ABI, Inc.
AFC Heating & Cooling
Atkinson Financial Services
Broome Cadillac
Carlson Holdings, LLC
Cathia Bordner & Associates at Reece & Nichols
Chinnery Evans & Nail
Don Kahan Chevrolet
Gamber, Gene - Individual Member
Integral Construction Services

Kansas City Transitions Group
Lakewood Property Owners Association
Lee's Summit Chamber of Commerce
Lee's Summit Parks & Recreation
Messerli, Karen - Individual Member
Ministerial Alliance
Nevius Serig Palmer Architecture
Plaas Associates
PSI
Realty Trust Group

ReDiscover
Scott DeVouton, LLC
Shafer, Kline & Warren, Inc.
Spilker McKeone & Nelson PC
Summit Concrete
Taylor Kelly Construction
United Way of Greater Kansas City
Weed Man/Turf's Up, Inc.
Zimmer Companies



Staff

LSEDC is led by a professional and experienced staff:

Jim Devine, CEcD, President and CEO

Teresa Evans, BREP, Vice President

Shannan Cunniffe, Office Manager

Holly Braswell, Administrative Assistant



LSEDC boasts a professional staff who are industry experts with an average tenure of more than 9 years with this organization – and a combined total of more than 50 years in economic development. LSEDC staff members are recognized by their peers in economic development and hold advanced professional designations.





218 SE Main Street • Lee's Summit, Missouri 64063 • 816.525.6617 • www.leessummit.org

